



**Designed for possibilities.  
Made for people.**



[altro.com](http://altro.com)

# Altro Operetta

# Altro Orchestra

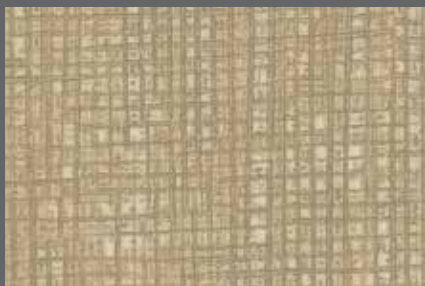
# Altro Serenade

Altro Orchestra Custom



# Altro Orchestra™ (15dB)

additional designs / weitere Designs / diseños adicionales / autres dessins



15dB Rigoletto | CH2876U



15dB Traviata | CH2877U



15dB Bassoon | CH2831U



15dB Carlotta | CH2865U



15dB Kora | CH2871U



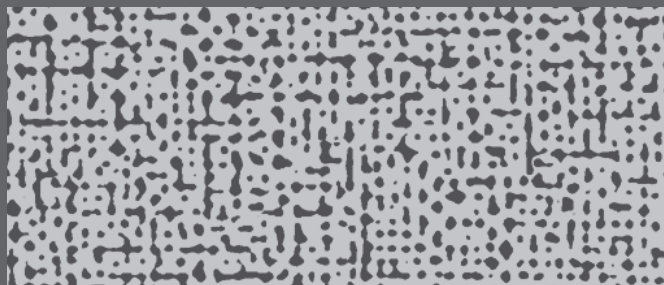
15dB Seville | CH2860U



15dB Nabucco | CH2873U



15dB Marimba | CH2863U



15dB Fidelio | CH2868U

Further options are available online. To find out more and order your free A4 samples visit [www.altro.com/Altro-Orchestra](http://www.altro.com/Altro-Orchestra)

Weitere Optionen sind online verfügbar. Um mehr zu erfahren und Ihre kostenlosen A4-Muster zu bestellen, besuchen Sie [www.altro.com/Altro-Orchestra](http://www.altro.com/Altro-Orchestra)

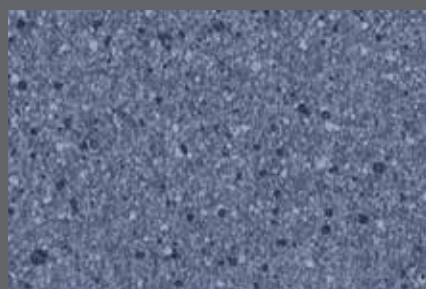
Más opciones están disponibles online. Para más información consiga sus muestras gratuitas en tamaño A4 visitando [www.altro.com/Altro-Orchestra](http://www.altro.com/Altro-Orchestra)

D'autres options sont disponibles en ligne. Pour en savoir plus et commander vos échantillons A4 gratuits, rendez-vous sur [www.altro.com/Altro-Orchestra](http://www.altro.com/Altro-Orchestra)

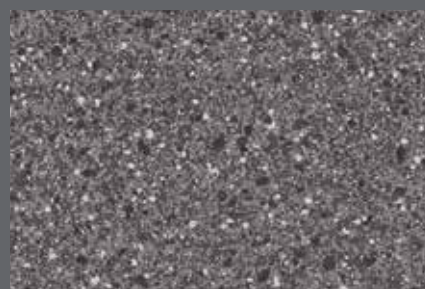
# Altro Operetta™ (4dB), Altro Orchestra™ (15dB), Altro Serenade™ (19dB)



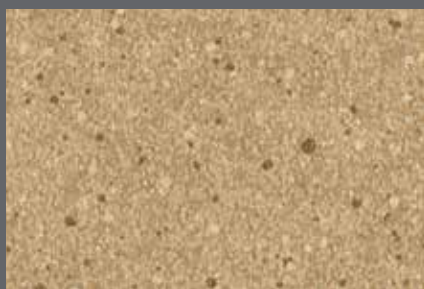
**15dB** Bongo | CH2840U  
WR461 / A1M152 / LRV 27



**4dB** Soprano | OP2137U  
**15dB** Drum | CH2837U  
**19dB** Moonlight | SE3937U  
WR458 / A1M74 / LRV 18



**4dB** Lola | OP2178U  
**15dB** Manon | CH2878U  
WR391 / A1M82 / LRV 17



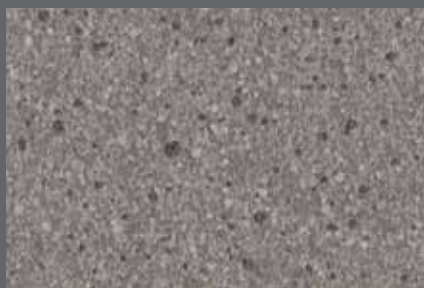
**4dB** Acapella | OP2135U  
**15dB** Oboe | CH2835U  
WR456 / A1M338 / LRV 34



**4dB** Madrigal | OP2134U  
**15dB** Violin | CH2834U  
**19dB** Chord | SE3934U  
WR455 / A1M361 / LRV 31



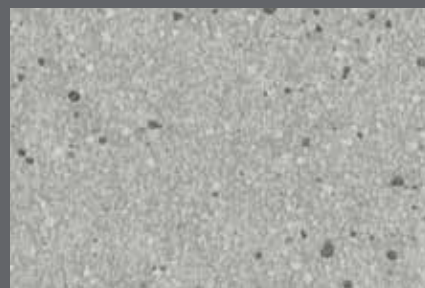
**4dB** Glee | OP2136U  
**15dB** Chimes | CH2836U  
WR457 / A1M335 / LRV 52



**4dB** Baroque | OP2133U  
**15dB** Flute | CH2833U  
**19dB** Anthem | SE3933U  
WR454 / A1M86 / LRV 22



**4dB** Leo | OP2179U  
**15dB** Conga | CH2879U  
WR390 / A1M390 / LRV 30



**4dB** Yeoman | OP2139U  
**15dB** Trombone | CH2839U  
**19dB** Caldara | SE3939U  
WR460 / A1M484 / LRV 39



**4dB** Underside Altro Operetta\*  
Rückseite Altro Operetta\*  
Base de Altro Operetta\*  
Dos Altro Operetta\*



**15dB** Underside Altro Orchestra  
Rückseite Altro Orchestra  
Base de Altro Orchestra  
Dos Altro Orchestra



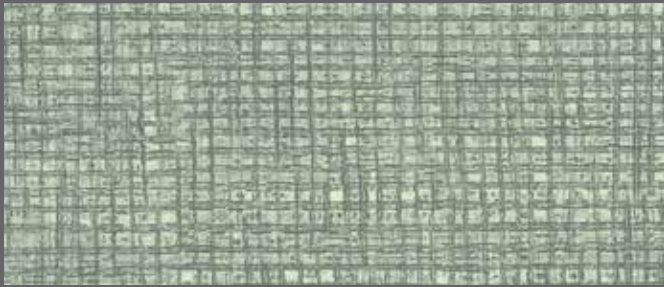
**19dB** Underside Altro Serenade\*  
Rückseite Altro Serenade\*  
Base de Altro Serenade\*  
Dos Altro Serenade\*

Codes: WR = weld rod, A1M = mastic, LRV = light reflectance value

Abkürzungen: WR = Schweißschnüre, A1M = Dichtmasse, LRV = Lichtreflexionsgrad

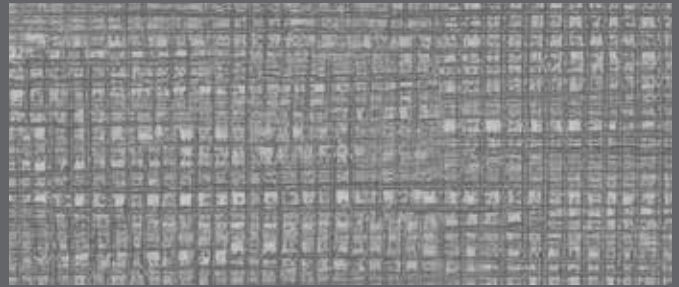
Códigos: WR = Cordón de soldadura, A1M = Mástique, LRV = Valor de reflectancia de la luz

Codes: WR = cordons de soudure, A1M = mastic, LRV = IRL : Indice de Réflexion Lumineuse



15dB

Guitar | CH2828U  
WR449 / A1M137 / LRV 29



4dB

15dB  
19dB

Canon | OP2129U  
Cello | CH2829U  
Encore | SE3929U  
WR450 / A1M81 / LRV 24



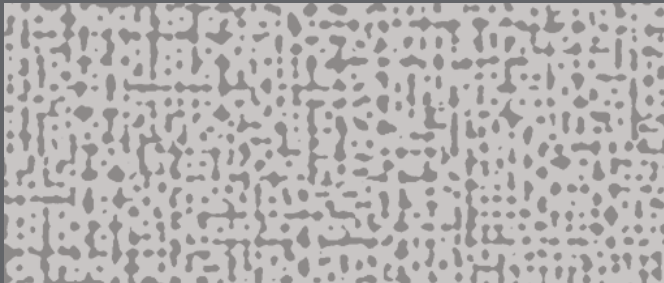
4dB  
15dB  
19dB

Clef | OP2125U  
Trumpet | CH2825U  
March | SE3925U  
WR446 / A1M347 / LRV 37



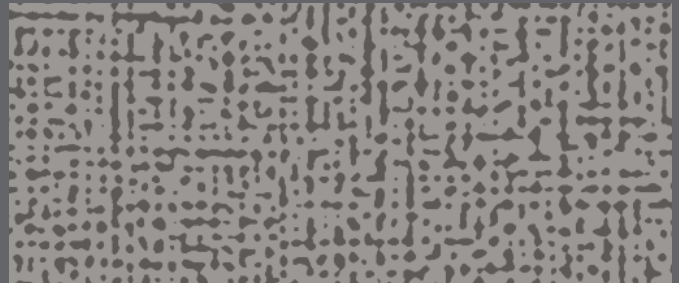
4dB  
15dB  
19dB

Drop | OP2127U  
Glockenspiel | CH2827U  
Opus | SE3927U  
WR448 / A1M361 / LRV 23



15dB

Reed | CH2874U  
WR513 / A1M85 / LRV 39



4dB  
15dB

Beethoven | OP2159U  
Polka | CH2859U  
WR502 / A1M390 / LRV 23

## Altro Orchestra Custom (15dB)



Ultimate design freedom, choose from our collection of images and patterns, or upload your own design.\*

Ultimative Designfreiheit, Sie können aus unserer Sammlung von Bildern und Mustern wählen oder Ihr eigenes Design hochladen.\*

Máxima libertad de diseño, para hacer su propio diseño, elija de entre nuestra colección de imágenes y patrones.\*

Ultime liberté de conception, faites votre choix parmi notre collection de photos et de motifs ou optez pour votre propre création.\*

Light reflectance values measured in accordance with BS 8493:2008. Exact material match with samples cannot be guaranteed.

Lichtreflexionsgrad (LRV) gemäß BS 8493:2008. Eine exakte Übereinstimmung des Materials mit Mustern kann nicht garantiert werden.

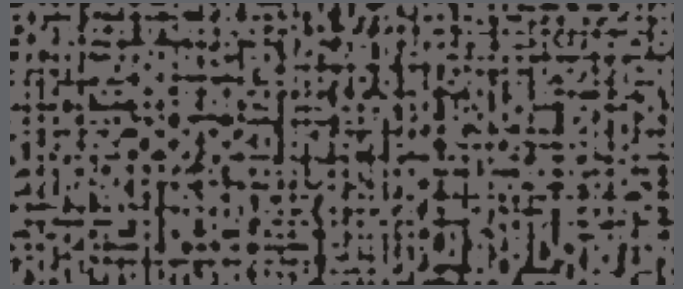
Los valores de reflectancia de la luz se miden de acuerdo con BS 8493:2008. Las muestras no pueden garantizar un color exacto.

Les valeurs de l'indice de Réflexion Lumineuse sont mesurées conformément au BS 8493:2008. Les échantillons ne peuvent garantir le coloris exact.



4dB  
15dB

Shake | OP2164U  
Cornet | CH2864U  
WR506 / A1M82 / LRV 20



4dB  
15dB

Black Forest | OP2158U  
Figaro | CH2858U  
WR501 / A1M82 / LRV 13



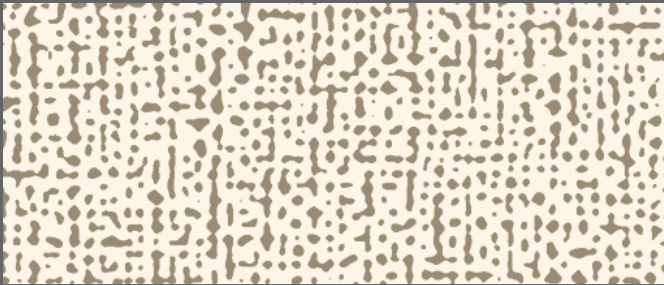
4dB  
15dB  
19dB

Vivo | OP2162U  
Tosca | CH2862U  
Elgar | SE3962U  
WR494 / A1M494 / LRV 23



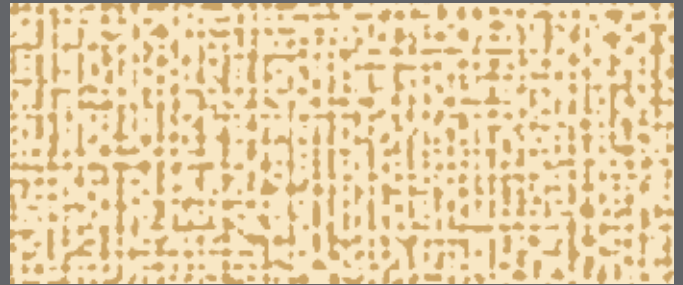
4dB  
15dB  
19dB

Allegra | OP2169U  
Sitar | CH2869U  
Charm | SE3969U  
WR510 / A1M347 / LRV 38



15dB

Macavity | CH2867U  
WR508 / A1M11 / LRV 57



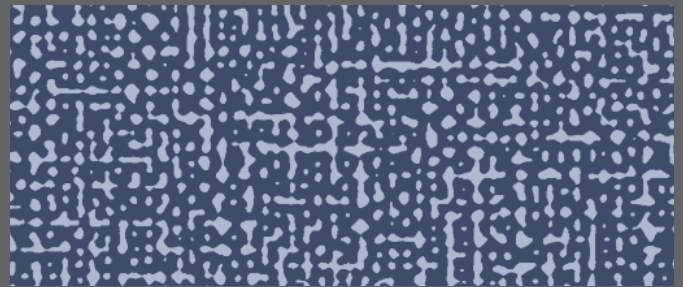
15dB

Elektra | CH2870U  
WR511 / A1M392 / LRV 58



4dB  
15dB  
19dB

Tutti | OP2157U  
Aurora | CH2857U  
Andante | SE3957U  
WR500 / A1M136 / LRV 60



4dB  
15dB

Cabasa | OP2161U  
Timpani | CH2861U  
WR504 / A1M417 / LRV 20

\*Swatches shown are Altro Orchestra except where indicated.

\*Sofern nicht anders angegeben, handelt es sich bei den gezeigten Mustern um Altro Orchestra.

\*Las muestras que se presentan son Altro Orchestra excepto donde así se indique.

\*Sauf indication contraire, les échantillons présentés sont ceux d'Altro Orchestra.

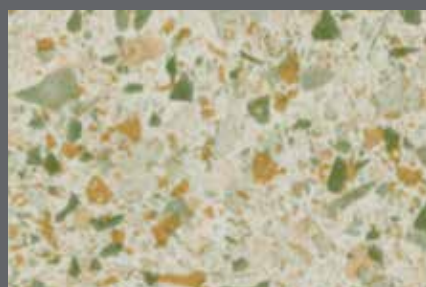


# Altro Orchestra™ (15dB)

additional designs / weitere Designs / diseños adicionales / autres dessins



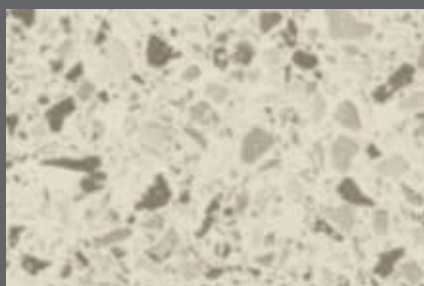
15dB Serpent | CH2850U



15dB Porter | CH2854U



15dB Volta | CH2851U



15dB Notturna | CH2853U



15dB Brass | CH2842U



15dB Woodwind | CH2843U



15dB Chromatic | CH2852U



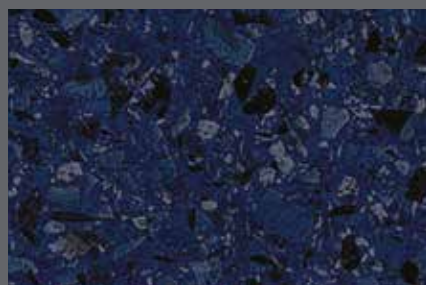
15dB Orfeo | CH2849U



15dB Othello | CH2848U



15dB Turandot | CH2847U



15dB Falstaff | CH2846U



15dB Montezuma | CH2845U

Further options are available online. To find out more and order your free A4 samples visit [www.altro.com/Altro-Orchestra](http://www.altro.com/Altro-Orchestra)

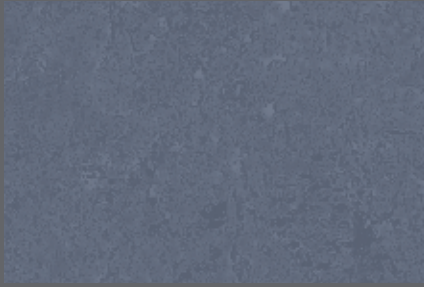
Weitere Optionen sind online verfügbar. Um mehr zu erfahren und Ihre kostenlosen A4-Muster zu bestellen, besuchen Sie [www.altro.com/Altro-Orchestra](http://www.altro.com/Altro-Orchestra)

Más opciones están disponibles online. Para más información consiga sus muestras gratuitas en tamaño A4 visitando [www.altro.com/Altro-Orchestra](http://www.altro.com/Altro-Orchestra)

D'autres options sont disponibles en ligne. Pour en savoir plus et commander vos échantillons A4 gratuits, rendez-vous sur [www.altro.com/Altro-Orchestra](http://www.altro.com/Altro-Orchestra)



# Altro Operetta™ (4dB), Altro Orchestra™ (15dB), Altro Serenade™ (19dB)



4dB  
15dB

Pulse | OP2118U  
Metal | CH2818U  
WR439 / A1M84 / LRV 16



4dB  
15dB

Tempo | OP2115U  
Club | CH2815U  
WR436 / A1M487 / LRV 17



4dB  
15dB  
19dB

Quintet | OP2114U  
Chant | CH2814U  
Metronome | SE3914U  
WR435 / A1M390 / LRV 26



4dB  
15dB  
19dB

Beat | OP2155U  
Maraca | CH2855U  
Dulcimer | SE3955U  
WR499 / A1M136 / LRV 56



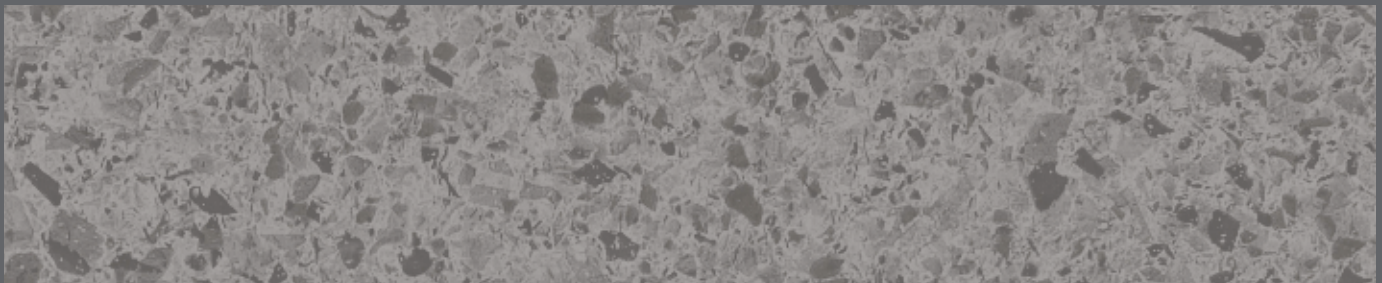
4dB  
15dB

Stanza | OP2156U  
Musette | CH2856U  
WR515 / A1M136 / LRV 49



4dB  
15dB

Vagabond | OP2141U  
String | CH2841U  
WR484 / A1M484 / LRV 40



4dB  
15dB

Vamp | OP2144U  
Percussion | CH2844U  
WR490 / A1M86 / LRV 18

Codes: WR = weld rod, A1M = mastic, LRV = light reflectance value

Abkürzungen: WR = Schweißschnüre, A1M = Dichtmasse, LRV = Lichtreflexionsgrad

Códigos: WR = Cordón de soldadura, A1M = Mástique, LRV = Valor de reflectancia de la luz

Codes: WR = cordons de soudure, A1M = mastic, LRV = IRL : Indice de Réflexion Lumineuse



1000 x 125 mm

**4dB** Castle Oak | WSM2075  
**15dB** Nordic Oak | WSMSC2816  
**19dB** Relax | WSMA3798  
WR335 / A1M335 / LRV 51



500/500 x 100 mm

**4dB** White Oak | WSM2051  
**15dB** Polar Oak | WSMSC2801  
WR335 / A1M335 / LRV 52



500/500 x 100 mm

**15dB** European Oak | WSMSC2823  
WR350 / A1M483 / LRV 30



500/500 x 100 mm

**4dB** Greyed Oak | WSM2063  
**15dB** Silver Oak | WSMSC2808  
WR347 / A1M347 / LRV 38



550/450 x 100 mm

**4dB** Platinum Oak | WSM2085  
**15dB** Pewter Oak | WSMSC2826  
**19dB** Slumber | WSMA37108  
WR478 / A1M390 / LRV 26



550/450 x 100 mm

**4dB** Pale Cherry | WSM2052  
**15dB** Smokey Cherry | WSMSC2803  
WR336 / A1M239 / LRV 22



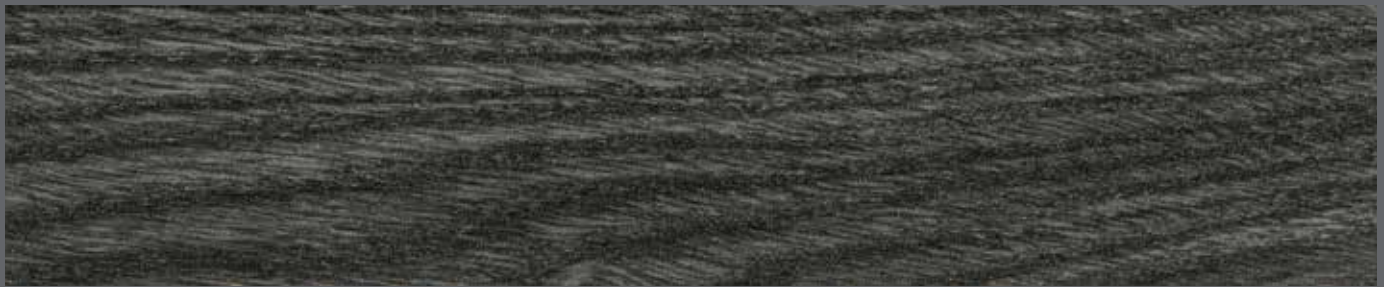
1000 x 125 mm

**4dB** Tower Oak | WSM2077  
**15dB** Galleon Oak | WSMSC2818  
WR322 / A1M239 / LRV 19



550/450 x 100 mm

**4dB** Classic Cherry | WSM2053  
**15dB** Regal Cherry | WSMSC2804  
WR337 / A1M337 / LRV 17



500/500 x 100 mm

**15dB** Shadow Oak | WSMSC2809  
WR348 / A1M348 / LRV 7

Light reflectance values measured in accordance with BS 8493:2008. Exact material match with samples cannot be guaranteed.

Lichtreflexionsgrad (LRV) gemäß BS 8493:2008. Eine exakte Übereinstimmung des Materials mit Mustern kann nicht garantiert werden.

Los valores de reflectancia de la luz se miden de acuerdo con BS 8493:2008. Las muestras no pueden garantizar un color exacto.

Les valeurs de l'indice de Réflexion Lumineuse sont mesurées conformément au BS 8493:2008. Les échantillons ne peuvent garantir le coloris exact.



500/500 x 100 mm

**4dB** Flaxen Oak | WSM2054  
**15dB** Straw Oak | WSMSC2811  
**19dB** Hush | WSMA3781  
WR338 / A1M338 / LRV 38



550/450 x 100 mm

**15dB** New Oak | WSMSC2824  
WR516 / A1M338 / LRV 46



500/500 x 100 mm

**4dB** Mellow Oak | WSM2056  
**15dB** Harvest Oak | WSMSC2805  
WR340 / A1M340 / LRV 37



500/500 x 100 mm

**15dB** Tawny Oak | WSMSC2807  
WR353 / A1M225 / LRV 25



500/500 x 100 mm

**15dB** Southern Oak | WSMSC2825  
WR352 / A1M352 / LRV 21



550/450 x 100 mm

**4dB** Mid Walnut | WSM2057  
**15dB** Bay Walnut | WSMSC2810  
**19dB** Lull | WSMA3782  
WR341 / A1M160 / LRV 15



550/450 x 100 mm

**4dB** Light Maple | WSM2055  
**15dB** Country Maple | WSMSC2802  
WR339 / A1M339 / LRV 24



500/500 x 100 mm

**4dB** Boardwalk Oak | WSM2081  
**15dB** Pier Oak | WSMSC2822  
**19dB** Restful | WSMA37104  
WR514 / A1M514 / LRV 21



1000 x 125 mm

**15dB** Old Oak | WSMSC2817  
WR339 / A1M339 / LRV 22

Dimensions indicate plank size within roll design.

Die Dimensionen geben die Plankengröße innerhalb der Rollenkonstruktion an.

Las dimensiones indican el tamaño de la plancha dentro del diseño del rollo.

















Les dimensions font référence à la taille de la lame dans la configuration du rouleau.



# Altro Operetta™, Altro Orchestra™, Altro Serenade™

2339 04/21

## Technical information / Technische Informationen / Información técnica / Information technique

	Fire behaviour tested in acc. with	Brandverhalten geprüft nach	Comportamiento ante el fuego testado de acuerdo con	Réaction au feu contrôlée selon	EN ISO 9239-1	<b>Altro Operetta</b> ≥ 8 kW/m <sup>2</sup> <b>Altro Orchestra</b> ≥ 4.5 kW/m <sup>2</sup> <b>Altro Serenade</b> ≥ 4.5 kW/m <sup>2</sup>
	Classified in acc. with	Einstufung nach	Clasificado de acuerdo con	Classement selon	EN ISO 11925-2 EN 13501-1	Pass / Bestanden / Conforme / Conforme <b>Altro Operetta</b> B <sub>1-s1</sub> <b>Altro Orchestra</b> C <sub>0-s1</sub> <b>Altro Serenade</b> C <sub>0-s1</sub>
	Slip resistance	Gleitreibungswiderstand Rutschhemmung/-sicherheit	Resistencia al deslizamiento	Résistance à la glissance	EN 13893 DIN 51130 / BGR 181	≥ 0.30 / DS R10*
	Sound insulation	Trittschallminderung	Aislamiento acústico	Isolation acoustique	EN ISO 10140	<b>Altro Operetta</b> ca. 4 dB <b>Altro Orchestra</b> ca. 15 dB <b>Altro Serenade</b> ca. 19 dB
	Flooring type	Belagsart	Tipo de pavimento	Type de sol	EN ISO 10582 <b>Altro Operetta</b> EN 651 <b>Altro Orchestra</b> <b>Altro Serenade</b>	Heterogeneous floor Heterogener Bodenbelag Suelo heterogéneo Sol hétérogène
	Thickness	Gesamtstärke	Espesor total	Epaisseur totale	EN ISO 24346	<b>Altro Operetta</b> 2.0 mm <b>Altro Orchestra</b> 2.85 mm <b>Altro Serenade</b> 3.9 mm
	Wear layer thickness	Nutzschichtdicke	Capa de uso	Couche d'usure	EN ISO 24340	0.7 mm
	Roll dimensions	Rollenformat	Dimensiones del rollo	Dimensions des rouleaux	EN ISO 24341	2 m x 20 m = 40 m <sup>2</sup>
	Weight	Flächengewicht	Peso	Poids	EN ISO 23997	<b>Altro Operetta</b> 2.66 kg/m <sup>2</sup> <b>Altro Orchestra</b> 2.60 kg/m <sup>2</sup> <b>Altro Serenade</b> 2.90 kg/m <sup>2</sup>
	Residual indentation	Resteindruck	Punzonamiento	Poinçonnement rémanent	EN ISO 24343-1	<b>Altro Operetta</b> ≤ 0.10 mm <b>Altro Orchestra</b> ≤ 0.20 mm <b>Altro Serenade</b> ≤ 0.20 mm
	Classification for use	Nutzungsklasse	Áreas de uso	Classe d'usage	EN ISO 10874	<b>Altro Operetta</b> 34, 43 <b>Altro Orchestra</b> 34, 42 <b>Altro Serenade</b> 34, 42
	Flexibility	Flexibilität	Flexibilidad	Flexibilité	EN ISO 24344	Pass / Bestanden / Conforme / Conforme
	Dimensional Stability	Maßänderung	Estabilidad dimensiona	Stabilité dimensionnelle	EN ISO 23999	≤ 0.4 %
	Light fastness	Farbbeständigkeit Lichtechtheit	Resistencia a la luz	Solidité à la lumière	EN ISO 105-B02	≥ 6
	Castor chair abrasion	Stuhllolleneignung	Huellas de sillas de ruedas	Résistance à la chaise à roulettes	EN 425	Yes, type W / Ja, Typ W Si, tipo W / Oui, type W
	Wear resistance	Verschleißgruppe	Abrasión	Résistance à l'usure	EN 660-2	Group T / Gruppe T / Grupo T / Groupe T
	Chemical resistance	Chemikalien-/Fleckenbeständigkeit	Resistencia a los productos químicos	Résistance aux produits chimiques	EN ISO 26987	Good / Gut / Buena / Bonne
	Underfloor heating	Eignung für Fußbodenheizung	Suelo radiante	Conductivité thermique	EN 12524	Suitable / Geeignet / Apto / compatible
	Electrical behaviours	Elektrostatisches Verhalten	Caraterísticas eléctricas	Accumulation charges électrostatiques	EN 1815	≤ 2 kV, antistatic / ≤ 2 kV, antistatisch ≤ 2 kV, antiestáticas / ≤ 2 kV, antistatique
	VOC emissions	VOC Emissionen	Emissiones de COV	Emissions de COV	CDPH 1350 / Floorscore Indoor Air Comfort Gold	Approved / Zertifiziert Conforme / Conforme Approved / Zertifiziert Conforme / Conforme

Altro Limited a company certified by SGS to ISO 9001 and ISO 14001.



\*Information sur le niveau d'émission de substances volatiles dans l'air intérieur, présentant un risque de toxicité par inhalation, sur une échelle de classe allant de A+ (très faibles émissions) à C (fortes émissions).



\*For enhanced safety, see our ranges that offer sustained slip resistance for life.

**CE** Altro Operetta | 17 | Debolon Dessauer Bodenbeläge GmbH & Co. KG, Ebertallee 209, 06846 Dessau-Roßlau | DIN EN ISO 10582 | DOP-No. R300.1-RN-D028 | Reaction to fire: Bfl-s1 | Slip resistance: DS | Formaldehyde: E1 | DIN EN 14041:2004/AC:2006 | 1658 | Resilient floor covering to be used within a building

**CE** Altro Orchestra | 17 | debolon dessauer bodenbeläge GmbH & Co. KG, Ebertallee 209, 06846 Dessau-Roßlau | DIN EN 651 | DOP-No. R200.1 Silence-RN-D029 | Reaction to fire: Cfl-s1 | Slip resistance: DS | Formaldehyde: E1 | DIN EN 14041:2004/AC:2006 | 1658 | Resilient floor covering to be used within a building

**CE** Altro Serenade | 17 | Debolon Dessauer Bodenbeläge GmbH & Co. KG, Ebertallee 209, 06846 Dessau-Roßlau | EN 651 | DOP-No. R450.1 Silence-RN-D030 | Reaction to fire: C-s1 | Slip resistance: DS | Formaldehyde: E1 | EN 14041:2004/AC:2006 | 1658 | Resilient floor covering to be used within a building

## Sustainability / Nachhaltigkeit / Sostenibilidad / Développement durable



†A+ BRE generic green guide rating for resilient flooring, full details available at [www.thegreenguide.org.uk](http://www.thegreenguide.org.uk)

## Installation and maintenance / Verlegung und Pflege / Instalación y mantenimiento / Pose et entretien

Please refer to Altro installation and maintenance instructions. Failure to follow these instructions can affect product performance. Technical information on installation and staining can be found at [www.altro.com](http://www.altro.com)  
Bitte beachten Sie die Altro Verlege- und Pflegeanleitungen. Erfolgt Verlegung und Pflege des Bodenbelags nicht gemäß Anleitung, kann sich dies auf die Eigenschaften auswirken. Technische Informationen zur Chemikalienbeständigkeit sowie zur Verlegung und Pflege finden Sie unter [www.altro.de](http://www.altro.de)

Consulte las instrucciones de instalación y mantenimiento de Altro. El no respetar estas instrucciones podría afectar al rendimiento del producto. Para más información sobre mantenimiento o instalación de nuestros productos pincha aquí: [www.altroscandess.com](http://www.altroscandess.com)  
Veuillez vous référer aux instructions de notre guide d'installation et d'entretien. Le non respect de ces instructions peut affecter la performance du revêtement. L'information technique sur la pose et le traitement des taches est également disponible sur notre site internet [www.altro.fr](http://www.altro.fr)

Altro, Designed for possibilities. Made for people. Altro Operetta, Altro Orchestra, Altro Serenade and Altro Easyclean technology are trademarks of Altro Limited.

United Kingdom ☎ +44 (0) 1462 707 700 ✉ [enquiries@altro.com](mailto:enquiries@altro.com) Germany ☎ +49 (0) 340 6500 0 ✉ [anfrage@altro.de](mailto:anfrage@altro.de)  
Spain ☎ +34 91 549 5230 ✉ [suelos@altro.com](mailto:suelos@altro.com) France ☎ +33 1 57 32 92 30 ✉ [france@altro.com](mailto:france@altro.com)

Subject to alteration, Irrtum und Änderung vorbehalten. Sujeto a alteración. Sous réserve de modifications.